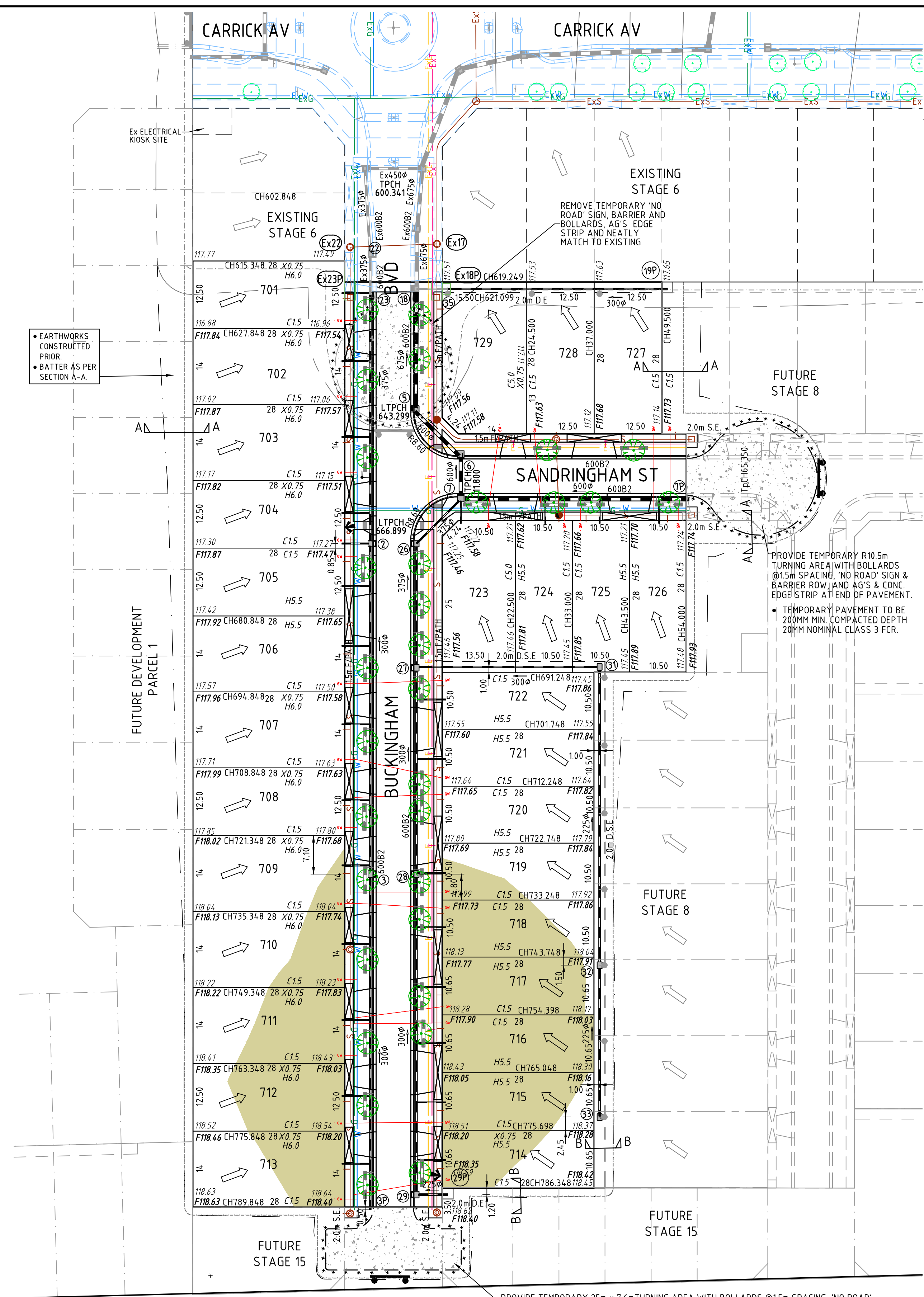
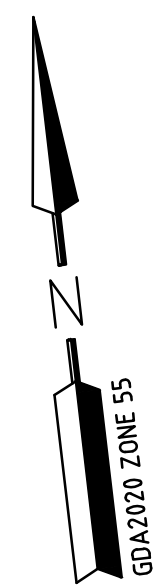
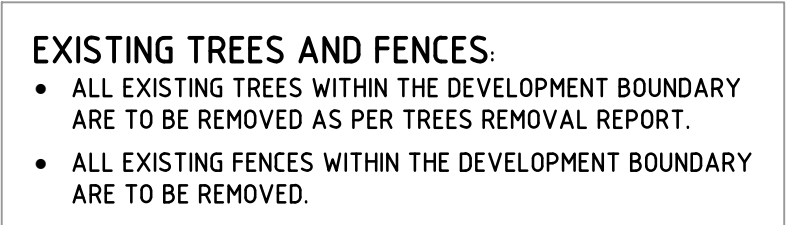
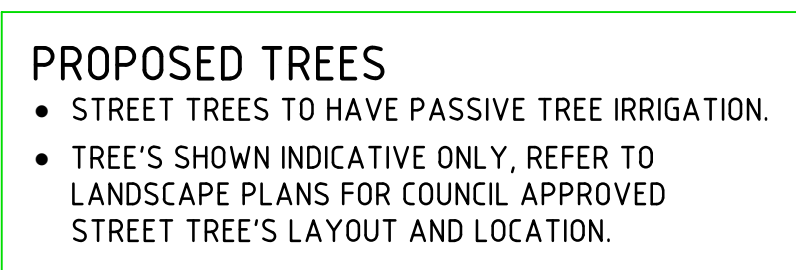
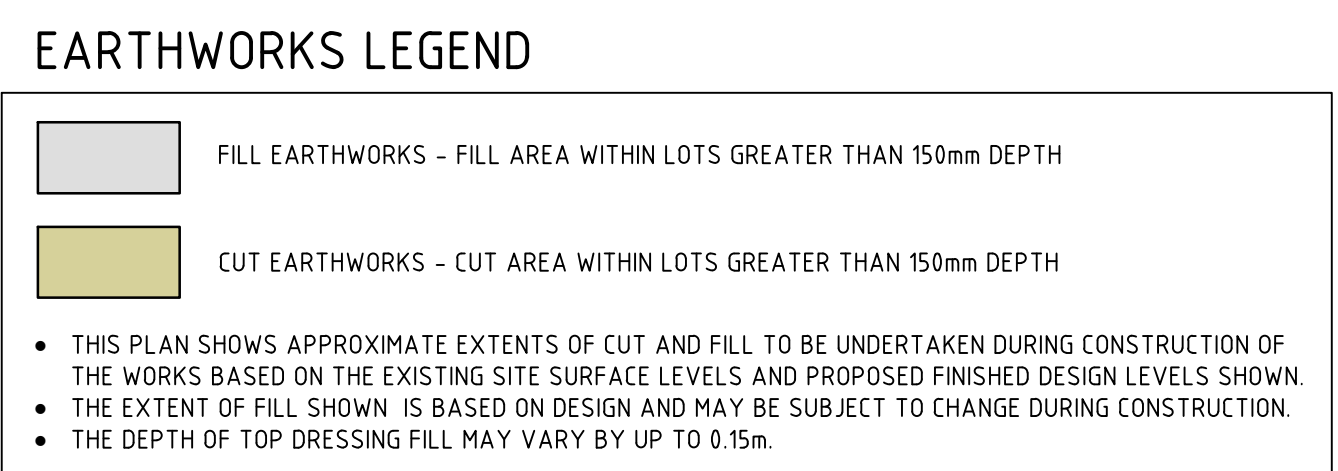
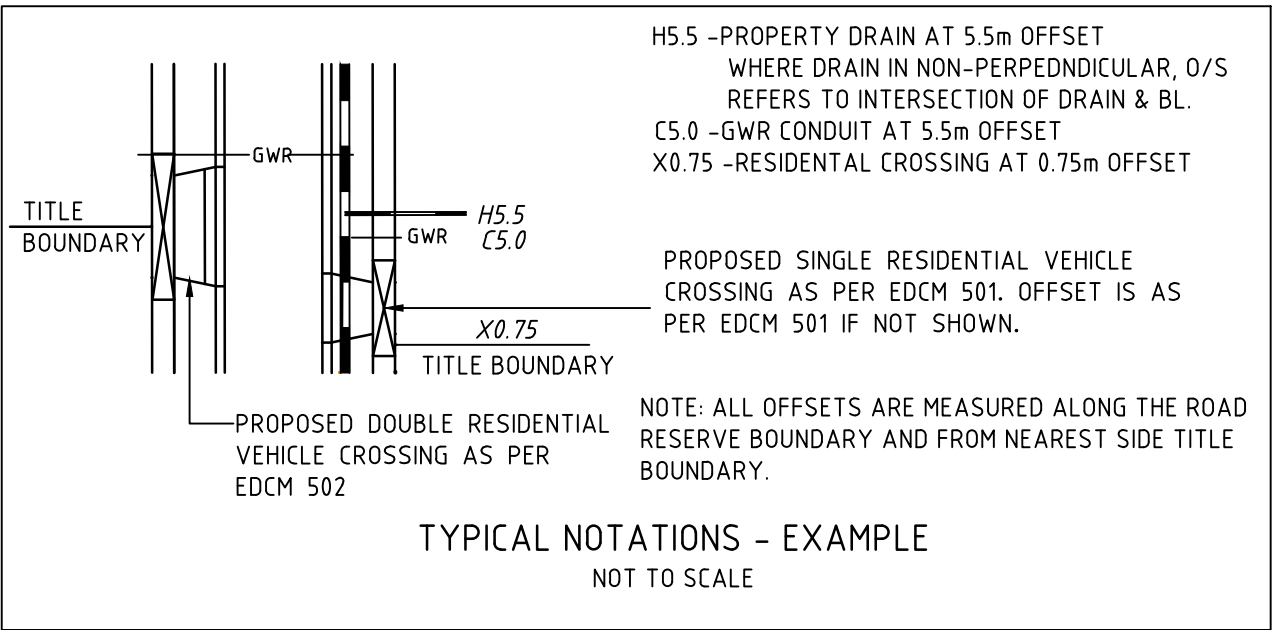


H:\23299\PARCEL 2&3\PL 2 STAGE 1\CAD\DWG SET\ROAD AND DRAINAGE\23299\_P2\_6.DWG



LAYOUT PLAN  
Scale 1:500 @ A1





**APPROVED  
DETAILED ENGINEERING PLANS**  
Mangala Jayasinghe  
ENGINEERING SERVICES  
Date: 16/11/2023

**PRELIMINARY  
PLAN ONLY**  
NOT APPROVED FOR  
CONSTRUCTION

**WARNING**  
BEWARE OF UNDERGROUND SERVICES  
THE LOCATIONS OF UNDERGROUND SERVICES ARE APPROXIMATE ONLY AND THEIR EXACT POSITION SHOULD BE PROVEN ON SITE. NO GUARANTEE IS GIVEN THAT ALL EXISTING SERVICES ARE SHOWN.

LEGEND	
	DRAIN, PROPERTY INLET & PIT
	EX DRAIN & PIT
	GAS AND WATER CONDUIT
	DIRECTION OF LEGAL POINT OF DISCHARGE
	OVERLAND FLOW PATH DIRECTION
	FUTURE DRAIN & PIT
	HOUSE DRAIN
	SEWER AND MAINTENANCE HOLE
	EX SEWER AND MAINTENANCE HOLE
	FUT. SEWER AND MAINTENANCE HOLE
	WATER MAIN
	EX WATER MAIN, VALVE & HYDRANT
	FUTURE WATER MAIN
	RECYCLED WATER MAIN
	EX RECYCLED WATER MAIN, VALVE & HYDRANT
	FUTURE RECYCLED WATER MAIN
	GAS MAIN
	EX GAS MAIN, VALVE
	FUTURE GAS MAIN
	OPTICAL SERVICES & PITS
	EX OPTICAL SERVICES & PITS
	ELECTRICAL U.G. SERVICES
	EXISTING ELECTRICAL U.G. SERVICES
	EX ELECTRICAL ASSETS
	EX OVER HEAD ELECTRICAL ASSETS
	GAS AND WATER CONDUITS
	TOP OF BATTER
	TOE OF BATTER
	PROPOSED FENCE
	EXISTING FENCE
	EXISTING WALL OR BUILDING
	FINISHED SURFACE LEVEL
	PROPOSED BATTER LEVEL
	PAVEMENT/FOOTPATH SURFACE LEVEL
	INVERT LEVEL OF PIPE, PIT OR OPEN DRAIN
	TANGENT POINT
	CHAINAGES
	PIT NUMBER
	DRAINAGE PIPE DIAMETER AND FLOW DIRECTION
	TBM
	PSM
	PROPOSED SAFETY BARRIER
	EXISTING SAFETY BARRIER
	TACTILE - DIRECTIONAL
	TACTILE - HAZARD
	PROPOSED TREE
	EXISTING TREE
	EXISTING TREE TO BE REMOVED
	EXISTING TREE TO BE REMOVED
	PROPOSED PASSIVE STREET TREE IRRIGATION GRAVEL TRENCH WITH KERB INLET DIVERSION (ONE TREE PIT PER LOT)
	PROPOSED CONTOURS
	EXISTING CONTOURS

THIS DRAWING IS NOT TO BE COPIED OR SCALED

VERSION	REMARKS		
C	COUNCIL COMMENTS	03.11.23	JS
B	COUNCIL COMMENTS	10.10.23	JS
A	PRELIMINARY ISSUE	14.04.23	JS

DRAWN BY	S.SATHASIVAM	DESIGNED BY	J.SIGABALAVU
MELWAY	343 H7	CHECKED BY	S. ANTONPOULOS
DATUM	AHD	AUTHORISED BY	S. RAVIDA



**REEDS  
CONSULTING**

www.reedsconsulting.com.au  
engineering@reedsconsulting.com.au

LAND SURVEYING  
CIVIL ENGINEERING  
PLANNING  
DEVELOPMENT CONSULTING

Lvl 16, 501 Swanston Street Melbourne Victoria 3000  
p (03) 8660 3000

Copyright © Reeds Consulting Pty Ltd  
All Rights Reserved 2021

CITY OF MELTON 59-85 ALFRED, STRATHULLOH BALMORAL ESTATE - PARCEL 2&3, STAGE 7 LAYOUT PLAN		DRAWING No. <b>7R2</b>	VERSION <b>C</b>
		REFERENCE <b>23299E/P2/7</b>	
		SHEET 2 OF 13	